

PRODUCT NO.
92193

				REVISIONS				
S	Guardian Transfer to Nantong	J05-0215	M.H.4/25/05	REV	DESCRIPTION	ECN	BY	DATE
T	REVISED (ADDED -*****F)	N05-0127	WB J05/18/05	A	RELEASED	J30022	M.K	1/19/93
U	ADD NEW P/N -120CAHLF	N07-0026	DT 1/29/07	B	REVISED	J30128	M.K	4/27/94
				C	REVISED	J40163	M.K	5/26/94
				D	REVISED	V40740	M.K	6/24/94
				E	REVISED	V40840	M.K	7/5/94
				F	REVISED	J40198	M.K	7/19/94
				G	REVISED	V32120	M.K	12/27/94
				H	REVISED	J40349	M.K	1/20/95
				J	REVISED	J50242	M.K	9/18/95
				K	REVISED	V60956	M.K	7/29/96
				L	REVISED (ADDED-050CAH -130CA -130CAH)	J70134	K.S	8/8/97
				M	REVISED	N90076	M.K	7/22/99
				N	REVISED (ADDED-502FA)	V91595	M.K	11/11/99
				P	REVISED	J05-0198	M.H	4/4/05
				R	REVISED	V04-0820	M.H	4/25/05

PRODUCT NO.	STAND	DIM "N"	PUSH ROD	HDR	HOLD DOWN	MECH ASSY	HDR ASSY	DIM "P"	HDR	SHEET	MOUNT STYLE TO PCB
92193-XXXXXX	OFF(mm)	(mm)	COLOR	SOLDER TAIL		92192-XXXXX	92140-XXXX	(mm)	COLOR	NO.	& DIRECTION OF PUSH ROD
000AA	0	8	BLACK	R/A	NONE	00AA	000	2.8			
000CA	0	13	BLACK	R/A	NONE	00CA	000	2.8			
000CAH	0	13	BLACK	R/A	YES	00CAH	000H	2.8			
000CB	0	13	BLUF	R/A	NONE	00CB	000	2.8			
000CBH	0	13	BLUE	R/A	YES	00CBH	000H	2.8			
000FA	0	21	BLACK	R/A	YES	00FA	000	2.8			
001AA	0	8	BLACK	SMT STAGGERED	NONE	00AA	001	-#			
001AAH	0	8	BLACK	SMT STAGGERED	YES	00AAH	001H	-#	BLACK	NO.2	
001CA	0	13	BLACK	SMT STAGGERED	NONE	00CA	001	-#			
001CAH	0	13	BLACK	SMT STAGGERED	YES	00CAH	001H	-#			
001FA	0	21	BLACK	SMT STAGGERED	NONE	00FA	001	-#			
001FAH	0	21	BLACK	SMT STAGGERED	YES	00FAH	001H	-#			
002CA	0	13	BLACK	SMT IN LINE	NONE	00CA	002	-#			
002CAH	0	13	BLACK	SMT IN LINE	YES	00CAH	002H	-#			
020CA	2	13	BLACK	R/A	NONE	02CA	040	2.5			
040CA	4	13	BLACK	R/A	NONE	04CA	010	2.8	BLACK	NO.3	
050CA	5	13	BLACK	R/A	NONE	05CA	020	2.8			
050CAH	5	13	BLACK	R/A	YES	05CAH	020H	2.8			
100CA	0	13	BLACK	R/A	NONE	10CA	000	2.8			
100CAH	0	13	BLACK	R/A	YES	10CAH	000H	2.8			
101CA	0	13	BLACK	SMT STAGGERED	NONE	10CA	001	-#			
101CAH	0	13	BLACK	SMT STAGGERED	YES	10CAH	001H	-#	BLACK	NO.4	
101FA	0	21	BLACK	SMT STAGGERED	NONE	10FA	001	-#			
101FAH	0	21	BLACK	SMT STAGGERED	YES	10FAH	001H	-#			
102CA	0	13	BLACK	SMT IN LINE	NONE	10CA	002	-#			
102CAH	0	13	BLACK	SMT IN LINE	YES	10CAH	002H	-#			
120CA	2	13	BLACK	R/A	NONE	12CA	040	2.5			
120FA	2	21	BLACK	R/A	NONE	12FA	040	2.5			
130CA	3	13	BLACK	R/A	NONE	13CA	050	2.8			
130CAH	3	13	BLACK	R/A	YES	13CAH	050H	2.8	BLACK	NO.5	
140CA	4	13	BLACK	R/A	NONE	14CA	010	2.8			
150CA	5	13	BLACK	R/A	NONE	15CA	020	2.8			
500CA	0	13	BLACK	R/A	NONE	10CA	500	2.8			
500CAH	0	13	BLACK	R/A	YES	10CAH	500H	2.8			
500FA	0	21	BLACK	R/A	NONE	10FA	500	2.8			
501CA	0	13	BLACK	SMT STAGGERED	NONE	10CA	501	-#	NATURAL	NO.6	
501CAH	0	13	BLACK	SMT STAGGERED	YES	10CAH	501H	-#			
502CA	0	13	BLACK	SMT IN LINE	NONE	10CA	502	-#			
502CAH	0	13	BLACK	SMT IN LINE	YES	10CAH	502H	-#			
502FA	0	21	BLACK	SMT IN LINE	NONE	10FA	502	-#			
520CA	2	13	BLACK	R/A	NONE	12CA	540	2.5			
540CA	4	13	BLACK	R/A	NONE	14CA	510	2.8	NATURAL	NO.7	
550CA	5	13	BLACK	R/A	NONE	15CA	520	2.8			
600CA	0	13	BLACK	R/A	NONE	00CA	500	2.8			
600CAH	0	13	BLACK	R/A	YES	00CAH	500H	2.8			
601CA	0	13	BLACK	SMT STAGGERED	NONE	00CA	501	-#	NATURAL	NO.8	
601CAH	0	13	BLACK	SMT STAGGERED	YES	00CAH	501H	-#			
602CA	0	13	BLACK	SMT IN LINE	NONE	00CA	502	-#			
602CAH	0	13	BLACK	SMT IN LINE	YES	00CAH	502H	-#			
620CA	2	13	BLACK	R/A	NONE	02CA	540	2.5			
640CA	4	13	BLACK	R/A	NONE	04CA	510	2.8	NATURAL	NO.9	
650CA	5	13	BLACK	R/A	NONE	05CA	520	2.8			

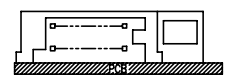
△

△

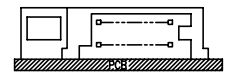
△

△

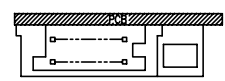
△



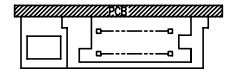
TOP MOUNT TO PCB & RIGHT PUSH ROD



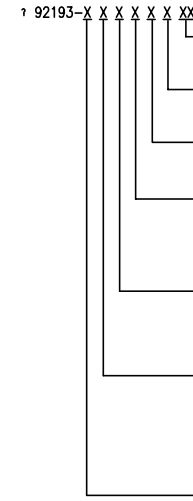
TOP MOUNT TO PCB & LEFT PUSH ROD



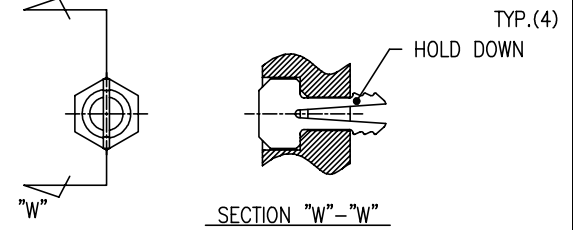
BOTTOM MOUNT TO PCB & RIGHT PUSH ROD



BOTTOM MOUNT TO PCB & LEFT PUSH ROD



- OPTIONAL LEAD FREE
- OPTIONAL HOLD DOWN
- PUSH ROD COLOR
- PUSH ROD LENGTH (DIM"N")
- HDR SOLDER TAIL
- STAND OFF HEIGHT (DIM "M")
- MOUNT STYLE TO PCB & DIRECTION OF PUSH ROD



92193-xxxH (OPTIONAL HOLD DOWN)

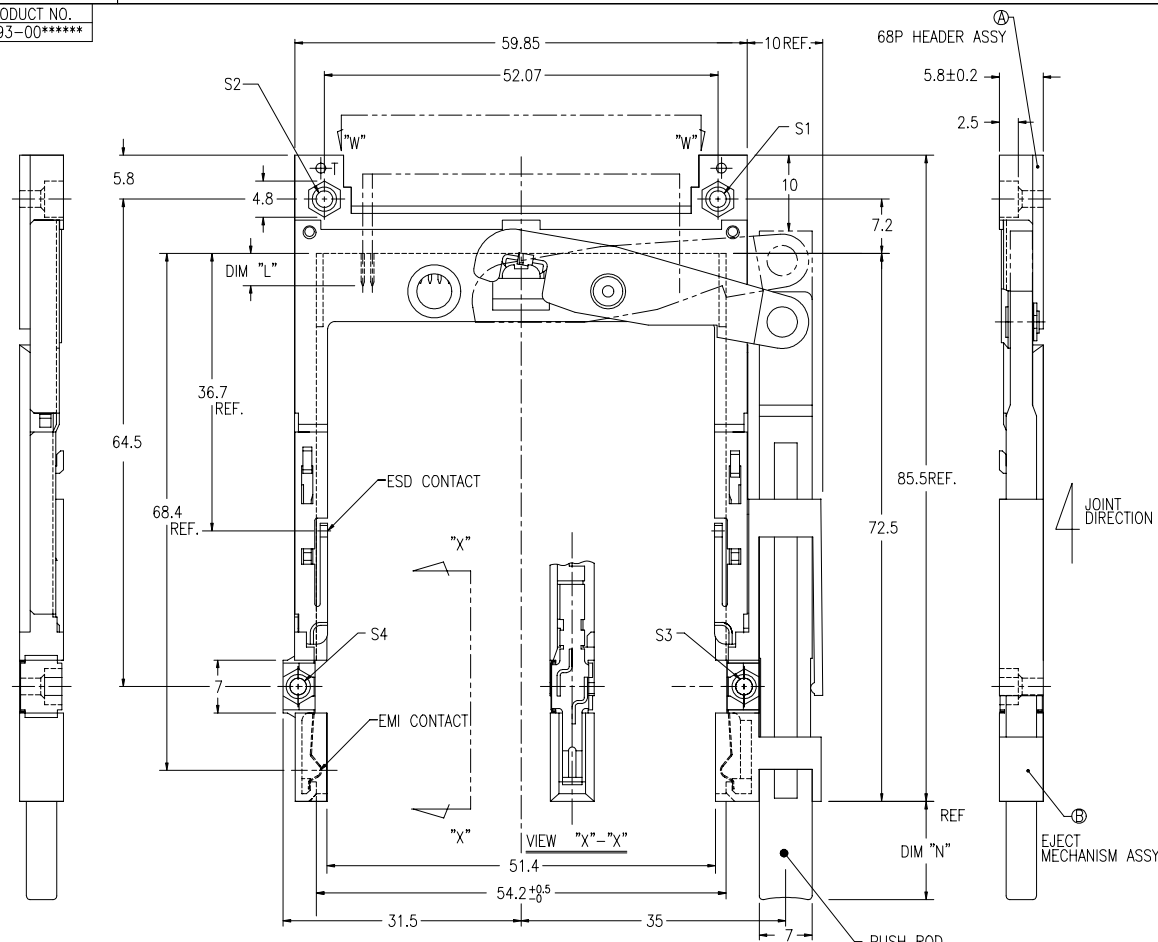
NOTE
1.THIS PRODUCT MEETS EUROPEAN UNION DIRECTIVES AND OTHER COUNTRY REGULATIONS AS DESCRIBED IN GS-22-008.

SHEET INDEX	ISSUE	SH NO.	MAT	DR. M. Hasegawa	DATE 4/25/05	CUSTOMER COPY	TITLE 68P EJECTOR HEADER ASSY FOR TYPE I/II/III (FOR 5.0V)	PRODUCT FAMILY SANF Header PCMCIA	CODE JP		
LINEAR	TOLERANCES UNLESS OTHERWISE SPECIFIED		FINISH	CHK M. Hasegawa	DATE 4/25/05	THIRD ANGLE PROJ	SCALE	SIZE	DWS. NO.	REV	SHEET
ANGLES				APPD		UNIT					

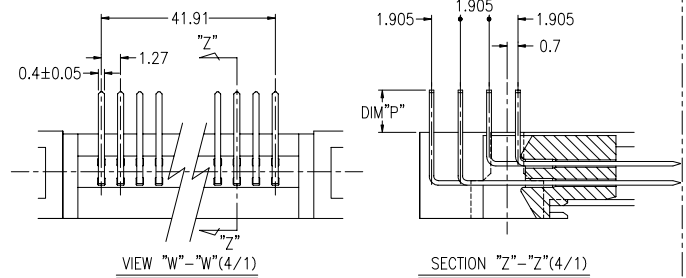
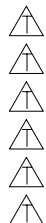


PRODUCT NO.
92193-00*****

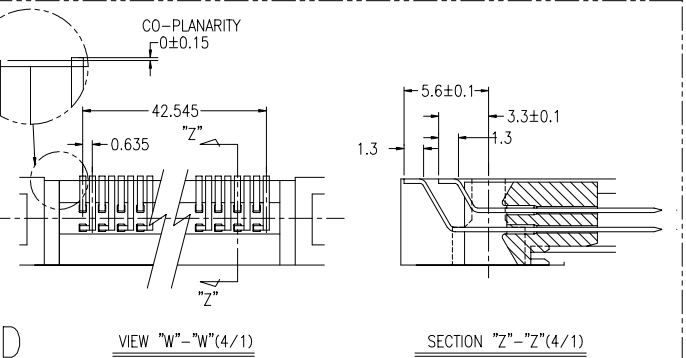
REVISED				REVISIONS					
REV	DESCRIPTION	ECN	BY	DATE					
M	REVISED	J40198	M.H	4/25/05	F	REVIS	J40198	M.K	7/19/94
T	REVISED (ADDED -*****LF)	N05-0127	WB	05/18/05	G	REVIS	V32120	M.K	12/27/94
					H	REVIS	J40349	M.K	1/9/95
					J	REVIS	J50242	M.K	9/18/95
					K	REVIS	J70134	K.S	8/8/97



- PRODUCT NO.
- 92193-000AA/000AALF
- 92193-000CA/000CALF
- 92193-000CAH/000CAHLF
- 92193-000CB/000CBLF
- 92193-000CBH/000CBHLF
- 92193-000FA/000FALF

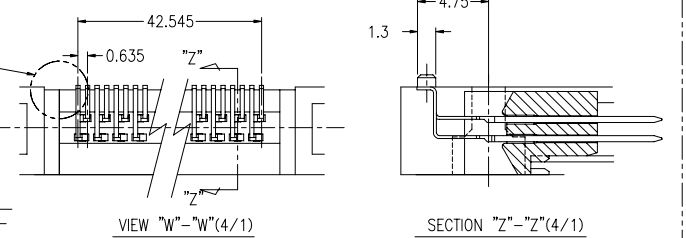


- PRODUCT NO.
- 92193-001AA
- 92193-001AAH
- 92193-001CA
- 92193-001CAH
- 92193-001FA
- 92193-001FAH



SMT STAGGERED

- PRODUCT NO.
- 92193-002CA
- 92193-002CAH



SMT SMT IN LINE

- NOTE
- EJECT FORCE 3.5Kg MAX.
 - ASSY PROCESS
 - TO MOUNT PART ① ON PWB WITH SCREW (S1,S2) AND SOLDER.
 - TO JOINT PART ② INTO PART ①, THEN FIX PART ③ WITH 2 SCREWS (S3,S4).
 - EJECT TRAVEL 8.0mm
- ④ MATERIAL
- PART ① (HEADER ASSY)
 - HOUSING : LCP UL94V-0
 - PIN : PHOSPHOR BRONZE
 - PART ② (EJECT MECHANISM ASSY)
 - GUIDE : POLYPHTHARAMID UL94V-0 BLACK
 - PUSH ROD : FLAME RETARDANT UL94V-0
 - PLATE : STAINLESS
 - EMI CONTACT : PHOSPHOR BRONZE
 - OPTIONAL HOLD-DOWN : BRASS

- ⑤ FINISH 5.1 PIN
- UNDER PLATING : 0.5µm MIN. Ni
CONTACT AREA : 0.1µm MIN. Au OVER 0.5µm MIN. Pd-Ni
SOLDER TAIL : 2.5µm MIN. Sn-Pb OR 2.5µm MIN. PURE Sn.(FOR -*****LF)
- 5.2 EMI CONTACT
UNDER PLATING : 2.0µm MIN. Ni
CONTACT AREA : 0.5µm MIN. Au
- 5.3 OPTIONAL HOLD-DOWN : 2.5µm MIN. PURE Sn.

PIN No.	DIM "L"		
	4.25±0.1	3.5±0.1	5.0±0.1
OTHERS	36.67	1.17,34	35.51,68

- SEE TA-946 FOR PCB LAYOUT.
- SEE 92140 FOR DETAILED HDR DIMENSION.
- SEE SHEET 1,2 REGARDING COMPONENTS.
- GENERAL TOLERANCE : ±0.3

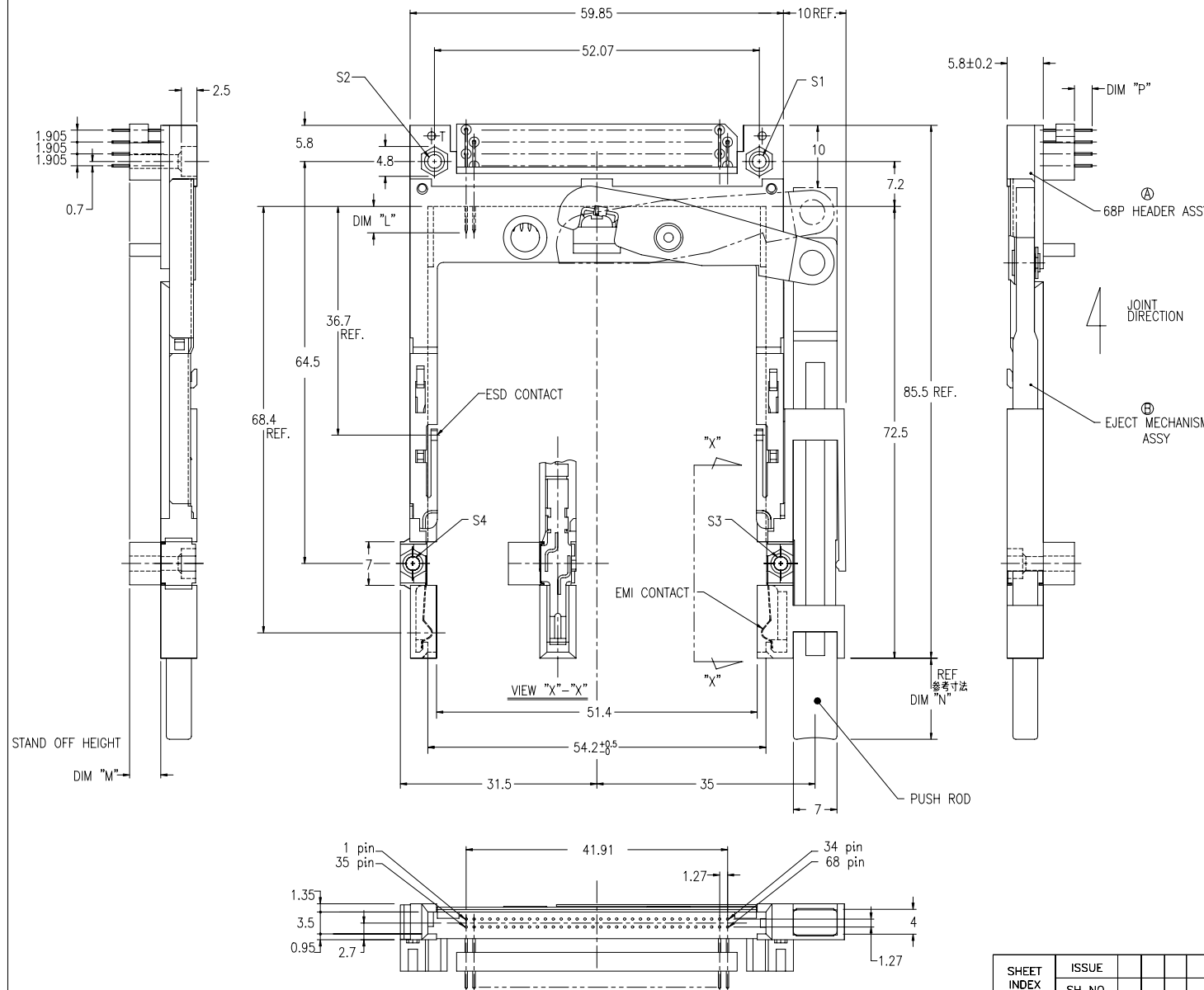
DF-003A REV F
DO NOT SCALE PRINT THIS INFORMATION IS CONFIDENTIAL AND IS DISCLOSED TO YOU ON CONDITION THAT NO FURTHER DISCLOSURE IS MADE BY YOU TO OTHER THAN FCI PERSONNEL WITHOUT WRITTEN AUTHORIZATION FROM FCI JAPAN K.K.

SHEET INDEX	ISSUE		MAT	DR	DATE	CUSTOMER COPY	TITLE	PRODUCT FAMILY	CODE
	SH NO.	SH NO.							
			SEE NOTE ④	M. Hasegawa	4/25/05		68P EJECTOR HEADER ASSY FOR TYPE I/II/III (FOR 5.0V)	SANF Header PCMCIA	JP
LINEAR			SEE NOTE ⑤	M. Hasegawa	4/25/05				
ANGLES				APPD					
							UNIT	MM	
							SCALE	2/1	
							SIZE	C	
							DWG. NO.	92193	
							REV	U	
							SHEET	3 of	



PRODUCT NO.
92193-020CA/020CALF
92193-040CA/040CALF
92193-050CA/050CALF
92193-050CAH/050CAHLF

REVISIONS				
REV	DESCRIPTION	ECN	BY	DATE
A	RELEASED	J30022	N.T	1/19/93
B	REVISED	J40163	M.K	5/26/94
C	REVISED	V40840	M.K	7/5/94
D	REVISED	V32120	M.K	12/27/94
E	REVISED	J40349	M.K	1/9/95
F	REVISED	J50242	M.K	9/18/95
G	REVISED (ADDED-050CAH)	J70134	K.S	8/8/97
T	REVISED (ADDED -*****LF)	N05-0127	WB	J05/18/05
U				



NOTE

- EJECT FORCE 3.5kg MAX.
- ASSY PROCESS
 - TO MOUNT PART ① ON PWB WITH SCREW (S1,S2) AND SOLDER.
 - TO JOINT PART ② INTO PART ①, THEN FIX PART ③ WITH 2 SCREWS (S3,S4).
- EJECT TRAVEL 8.0mm
- MATERIAL
 - PART ① (HEADER ASSY)
 - HOUSING : LCP UL94V-0
 - PIN : PHOSPHOR BRONZE
 - PART ② (EJECT MECHANISM ASSY)
 - GUIDE : POLYPHTHARAMID UL94V-0 BLACK
 - PUSH ROD : FLAME RETARDANT UL94V-0
 - PLATE : STAINLESS
 - EMI CONTACT : PHOSPHOR BRONZE
 - STANDOFF : ZINC ALLOYS DIE CASTING
- FINISH
 - PIN
 - UNDER PLATING : 0.5μm MIN. Ni
 - CONTACT AREA : 0.1μm MIN. Au OVER 0.5μm MIN. Pd-Ni
 - SOLDER TAIL : 2.5μm MIN. Sn-Pb OR 2.5μm MIN. PURE Sn.(FOR -*****LF)
 - EMI CONTACT
 - UNDER PLATING : 2.0μm MIN. Ni
 - CONTACT AREA : 0.5μm MIN. Au
 - STAND OFF : 3 ~5μm Ni, OVER 5 ~10μm Cu.
- PIN NO.

PIN No.	DIM "L"		
	OTHERS	36.67	35.51,68
1	4.25±0.1	3.5±0.1	5.0±0.1
- SEE TA-946 FOR PCB LAYOUT.
- SEE 92140 FOR DETAILED HDR DIMENSION.
- SEE SHEET1,2 REGARDING COMPONENTS.
- GENERAL TOLERANCE : ±0.3.

STAND OFF HEIGHT
DIM "M"

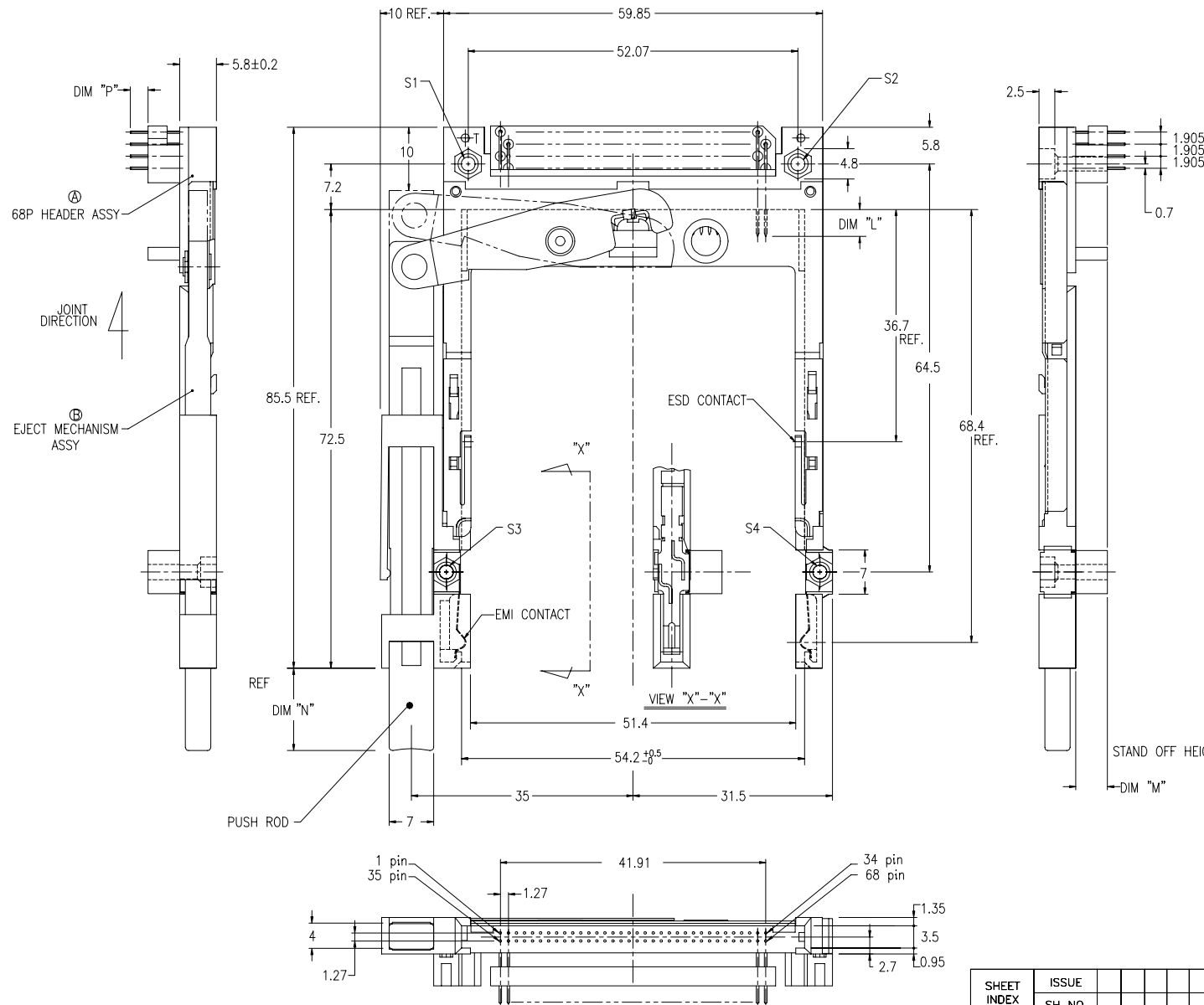
DF-003A REV. C

DO NOT SCALE PRINT THIS INFORMATION IS CONFIDENTIAL AND IS DISCLOSED TO YOU ON CONDITION THAT NO FURTHER DISCLOSURE IS MADE BY YOU TO OTHER THAN BERG PERSONNEL WITHOUT WRITTEN AUTHORIZATION FROM BERG ELECTRONICS JAPAN K.K.

SHEET INDEX	ISSUE											FCJ	
	SH NO.												
TOLERANCES UNLESS OTHERWISE SPECIFIED		MAT	DR	DATE	CUSTOMER COPY	TITLE						REV SHEET	
		SEE NOTE ④	J. Ono	8/8/97		68P EJECTOR HEADER ASSY FOR TYPE I/II/III (FOR 5.0V)						U 4 of	
LINEAR		FINISH	ENGR	DATE	THIRD ANGLE PROJ	SCALE	SIZE	DWG. NO.					
		SEE NOTE ③	K. Suguki	8/8/97	UNIT	2/1	C	92193					
ANGLES		APPD			MM								

PRODUCT NO.	
92193-120CA/120CA(H)LF	△
92193-120FA/120FALF	△
92193-130CA/130CALF	△
92193-130CAH/130CAHLF	△
92193-140CA/140CALF	△
92193-150CA/150CALF	△

REVISIONS				
REV	DESCRIPTION	ECN	BY	DATE
A	RELEASED	J30022	N.T	1/19/'93
B	REVISED	J40163	M.K	5/26/'94
C	REVISED	V40840	M.K	7/5/'94
D	REVISED	V32120	M.K	12/27/'94
E	REVISED	J40349	M.K	1/9/'95
F	REVISED	J50242	M.K	9/18/'95
G	REVISED (ADDED -130CA -130CAH)	J70134	K.S	8/8/'97
H	REVISED	N90076	M.K	7/22/'99
T	REVISED (ADDED -*****LF)	N05-0127	WB J	05/18/05
U				



NOTE

- EJECT FORCE 3.5kg MAX.
- ASSY PROCESS
 - TO MOUNT PART (A) ON PWB WITH SCREW (S1,S2) AND SOLDER.
 - TO JOINT PART (B) INTO PART (A), THEN FIX PART (B) WITH 2 SCREWS (S3,S4).
- EJECT TRAVEL 8.0mm
- MATERIAL
 - PART (A) (HEADER ASSY)
 - HOUSING : LCP UL94V-0
 - PIN : PHOSPHOR BRONZE
 - PART (B) (EJECT MECHANISM ASSY)
 - GUIDE : POLYPHTHARAMID UL94V-0 BLACK
 - PUSH ROD : FLAME RETARDANT UL94V-0
 - PLATE : STAINLESS
 - EMI CONTACT : PHOSPHOR BRONZE
 - STANDOFF : ZINC ALLOYS DIE CASTING
- FINISH
 - PIN
 - UNDER PLATING : 0.5µm MIN. Ni
 - CONTACT AREA : 0.1µm MIN. Au OVER 0.5µm MIN. Pd-Ni
 - SOLDER TAIL : 2.5µm MIN. Sn-Pb OR 2.5µm MIN. PURE Sn.(FOR -*****LF)
 - EMI CONTACT
 - UNDER PLATING : 2.0µm MIN. Ni
 - CONTACT AREA : 0.5µm MIN. Au
 - STAND OFF : 3 ~5µm Ni, OVER 5 ~10µm Cu.
- PIN NO.

PIN NO.	DIM "L"		
	4.25±0.1	3.5±0.1	5.0±0.1
OTHERS	36.67	1.17, 34	35.51, 68
- SEE TA-946 FOR PCB LAYOUT.
- SEE 92140 FOR DETAILED HDR DIMENSION.
- SEE SHEET1,2 REGARDING COMPONENTS.
- GENERAL TOLERANCE : ±0.3.

DF-003A REV. C

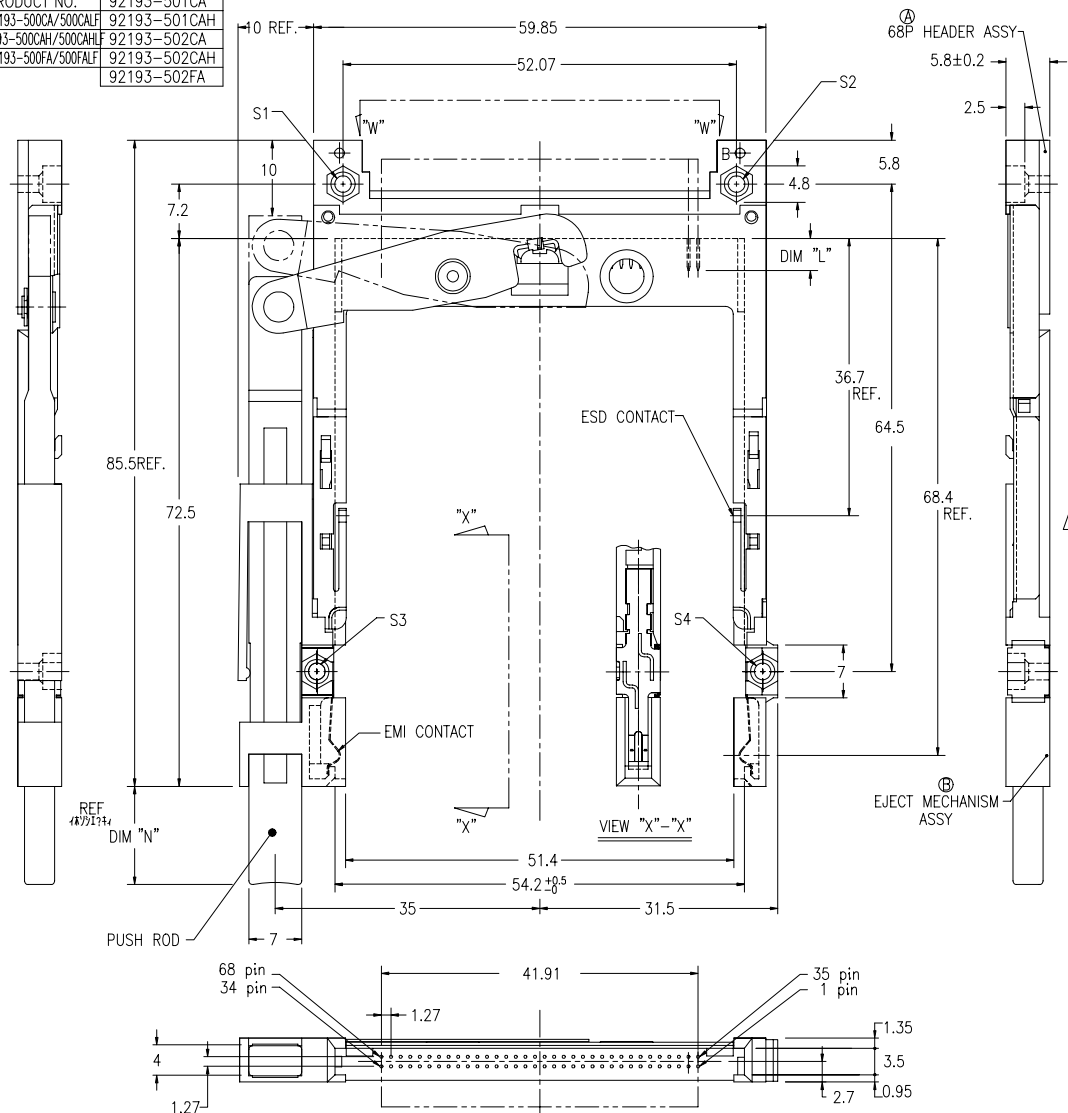
DO NOT SCALE PRINT THIS INFORMATION IS CONFIDENTIAL AND IS DISCLOSED TO YOU ON CONDITION THAT NO FURTHER DISCLOSURE IS MADE BY YOU TO OTHER THAN BERG PERSONNEL WITHOUT WRITTEN AUTHORIZATION FROM BERG ELECTRONICS JAPAN K.K.

SHEET INDEX	ISSUE										TITLE	SCALE	SIZE	DWG. NO.	REV	SHEET	
	SH NO.																
LINEAR	TOLERANCES UNLESS OTHERWISE SPECIFIED										68P EJECTOR HEADER ASSY FOR TYPE I/II/III (FOR 5.0V)	2/1	C	92193	U	6 of 6	
	MAT	DR	DATE	CUSTOMER COPY													
	SEE NOTE (4)	M. Hasegawa	7/22/'99														
	FINISH	CHK	THIRD ANGLE PROJ														
	SEE NOTE (3)	APPD															
ANGLES											UNIT	MM					

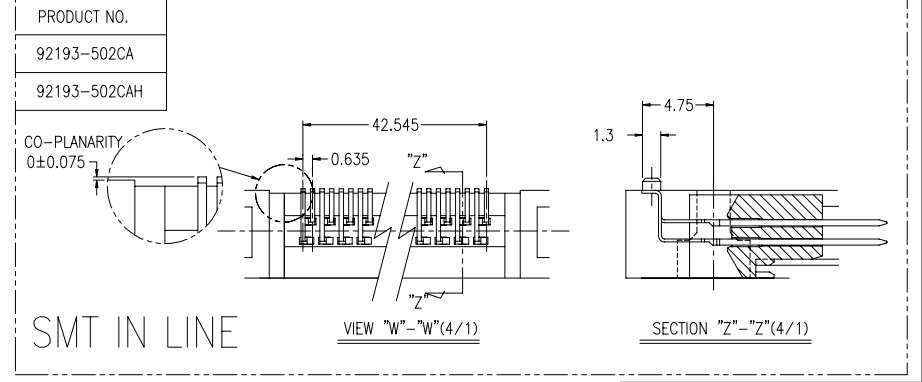
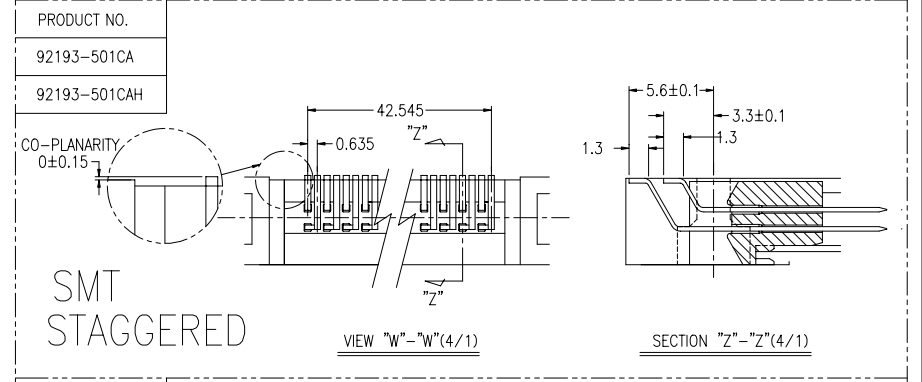
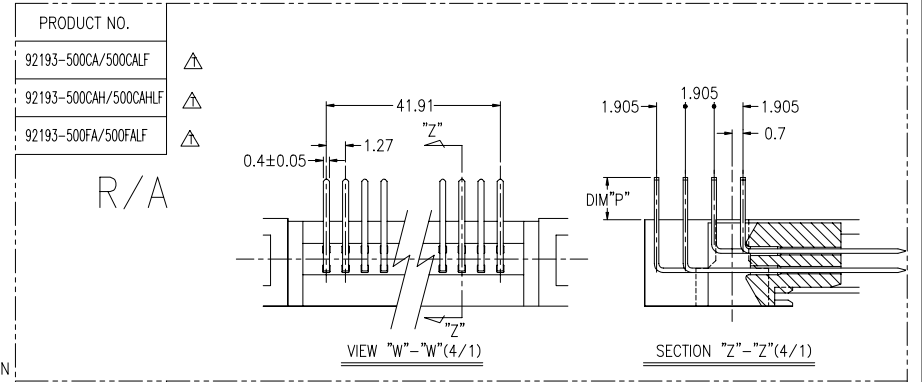


PRODUCT NO.	92193-501CA
△ 92193-500CA/500CALF	92193-501CAH
△ 92193-500CAH/500CAHLF	92193-502CA
△ 92193-500FA/500FALF	92193-502CAH
	92193-502FA

REVISED				REVISIONS					
K	REVISED	V91595	M.K	11/11/99	REV	DESCRIPTION	ECN	BY	DATE
T	REVISED (ADDED -*****LF)	N05-0127	WB	J 05/18/05	D	REVISED	V40840	M.K	7/5/94
U					E	REVISED	V32120	M.K	12/27/94
					F	REVISED	J40349	M.K	1/9/95
					G	REVISED	J50242	M.K	9/18/95
					H	REVISED	V60956	M.K	7/29/96
					J	REVISED	J70134	K.S	8/8/97



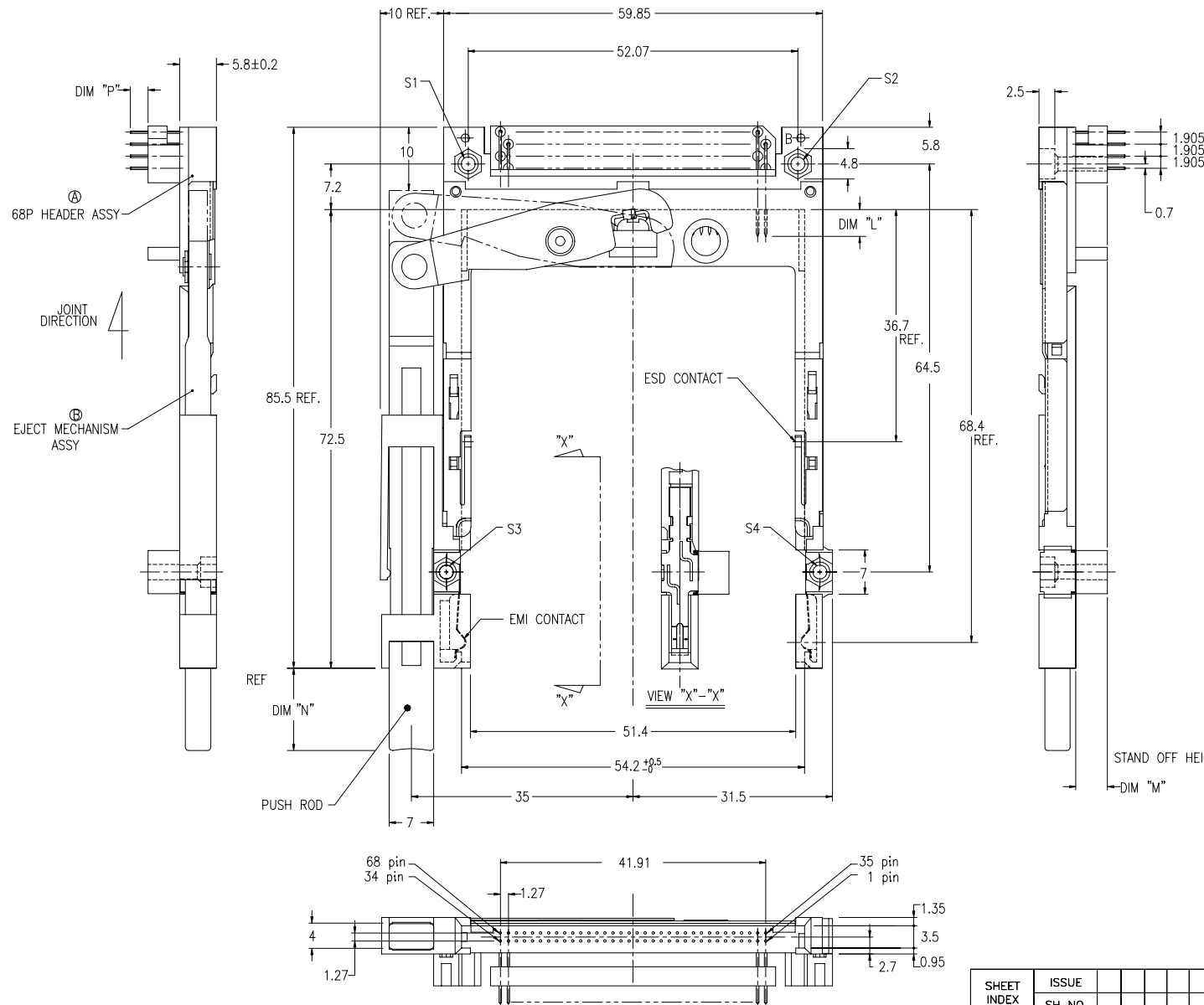
- NOTE
- EJECT FORCE 3.5Kg MAX.
 - ASSY PROCESS
 - TO MOUNT PART (A) ON PWB WITH SCREW (S1,S2) AND SOLDER.
 - TO JOINT PART (B) INTO PART (A), THEN FIX PART (B) WITH 2 SCREWS (S3,S4).
 - EJECT TRAVEL 8.0mm
- ④ MATERIAL
- PART (A) (HEADER ASSY)
 - HOUSING : LCP UL94V-0
 - PIN : PHOSPHOR BRONZE
 - PART (B) (EJECT MECHANISM ASSY)
 - GUIDE : POLYPHTHARAMID UL94V-0 BLACK
 - PUSH ROD : FLAME RETARDANT UL94V-0
 - PLATE : STAINLESS
 - EMI CONTACT : PHOSPHOR BRONZE
 - OPTIONAL HOLD-DOWN : BRASS
- ⑤ FINISH 5.1 PIN
- 5.2 EMI CONTACT
- UNDER PLATING : 2.0µm MIN. Ni
 CONTACT AREA : 0.5µm MIN. Au
 SOLDER TAIL : 2.5µm MIN. Sn-Pb OR 2.5µm MIN. PURE Sn.(FOR -*****LF)
- 5.3 OPTIONAL HOLD-DOWN : 2.5µm MIN. PURE Sn
6. PIN NO.
- | PIN No. | DIM "L" | |
|---------|----------|-----------|
| | OTHERS | 36.67 |
| 1 | 4.25±0.1 | 3.5±0.1 |
| 2 | 5.0±0.1 | 1.17, 34 |
| 3 | | 35, 51.68 |
- SEE TA-946 FOR PCB LAYOUT.
 - SEE 92140 FOR DETAILED HDR DIMENSION.
 - SEE SHEET 1,2 REGARDING COMPONENTS.
 - GENERAL TOLERANCE : ±0.3.



SHEET INDEX	ISSUE		MAT	DR	DATE	CUSTOMER COPY	TITLE
	SH NO.						
				J. Ono	11/11/99		68P EJECTOR HEADER ASSY FOR TYPE I/II/III (FOR 5.0V)
			SEE NOTE ④	ENGR	11/11/99		SCALE
			FINISH	CHK			SIZE
			SEE NOTE ⑤	APPD			DWG. NO.
							92193
							REV
							U
							7 of

PRODUCT NO.	
92193-520CA/520CALF	△
92193-540CA/540CALF	△
92193-550CA/550CALF	△

REVISIONS				
REV	DESCRIPTION	ECN	BY	DATE
A	RELEASED	J30022	N.T	1/19/93
B	REVISED	J30128	M.N	4/27/93
C	REVISED	J40163	M.K	5/26/94
D	REVISED	V40840	M.K	7/5/94
E	REVISED	V32120	M.K	12/27/94
F	REVISED	J40349	M.K	1/9/94
G	REVISED	J50242	M.K	9/18/95
T	REVISED (ADDED -*****L)	N05-0127	WB	05/18/05
U				



- NOTE
- EJECT FORCE 3.5kg MAX.
 - ASSY PROCESS
 - TO MOUNT PART ④ ON PWB WITH SCREW (S1,S2) AND SOLDER.
 - TO JOINT PART ⑤ INTO PART ④, THEN FIX PART ⑥ WITH 2 SCREWS (S3,S4)
 - EJECT TRAVEL 8.0mm
- ④ MATERIAL
- PART ④ (HEADER ASSY)
 - HOUSING : LCP UL94V-0
 - PIN : PHOSPHOR BRONZE
 - PART ⑤ (EJECT MECHANISM ASSY)
 - GUIDE : POLYPHTHARAMID UL94V-0 BLACK
 - PUSH ROD : FLAME RETARDANT UL94V-0
 - PLATE : STAINLESS
 - EMI CONTACT : PHOSPHOR BRONZE
 - STANDOFF : ZINC ALLOYS DIE CASTING
- ⑤ FINISH
- PIN
 - UNDER PLATING : 0.5μm MIN. Ni
 - CONTACT AREA : 0.1μm MIN. Au OVER 0.5μm MIN. Pd-Ni
 - SOLDER TAIL : 2.5μm MIN. Sn-Pb
 - OR 2.5μm MIN. PURE Sn.(FOR -*****L)
 - EMI CONTACT
 - UNDER PLATING : 2.0μm MIN. Ni
 - CONTACT AREA : 0.5μm MIN. Au
 - STAND OFF : 3 ~5μm Ni, OVER 5 ~10μm Cu.
6. PIN NO.
- | PIN No. | DIM "L" | | |
|---------|----------|---------|----------|
| | 4,25±0.1 | 3,5±0.1 | 5,0±0.1 |
| OTHERS | 36.67 | 1,17,34 | 35,51,68 |
7. SEE TA-946 FOR PCB LAYOUT.
 8. SEE 92140 FOR DETAILED HDR DIMENSION.
 9. SEE SHEET 1,2 REGARDING COMPONENTS.
 10. GENERAL TOLERANCE : ±0.3.

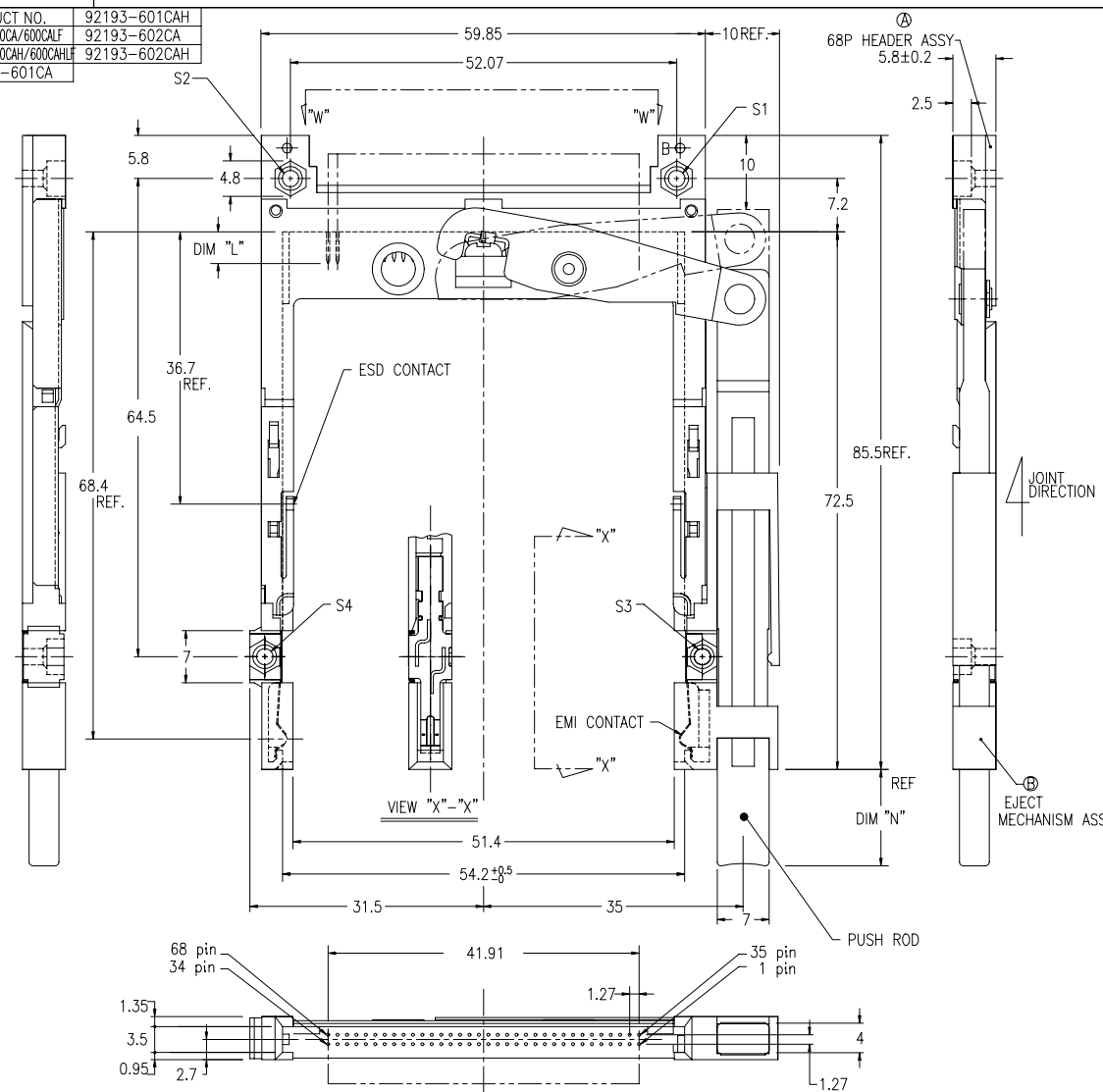
DF-003A REV. C
 DO NOT SCALE. PRINT THIS INFORMATION IS CONFIDENTIAL AND IS DISCLOSED TO YOU ON CONDITION THAT NO FURTHER DISCLOSURE IS MADE BY YOU TO OTHER THAN BERG PERSONNEL WITHOUT WRITTEN AUTHORIZATION FROM BERG ELECTRONICS JAPAN K.K.

SHEET INDEX	ISSUE										
	SH NO.										
TOLERANCES UNLESS OTHERWISE SPECIFIED		MAT	DR	DATE	CUSTOMER COPY	TITLE					
		SEE NOTE ④	J. Omata	9/18/95		68P EJECTOR HEADER ASSY FOR TYPE I/II/III (FOR 5.0V)					
LINEAR		FINISH	ENGR	DATE	THIRD ANGLE PROJ	SCALE	SIZE	DWG. NO.	REV	SHEET	
		SEE NOTE ③	M. Kajiwara	9/18/95	UNIT	2/1	C	92193	U	8 of	
ANGLES		APPD									

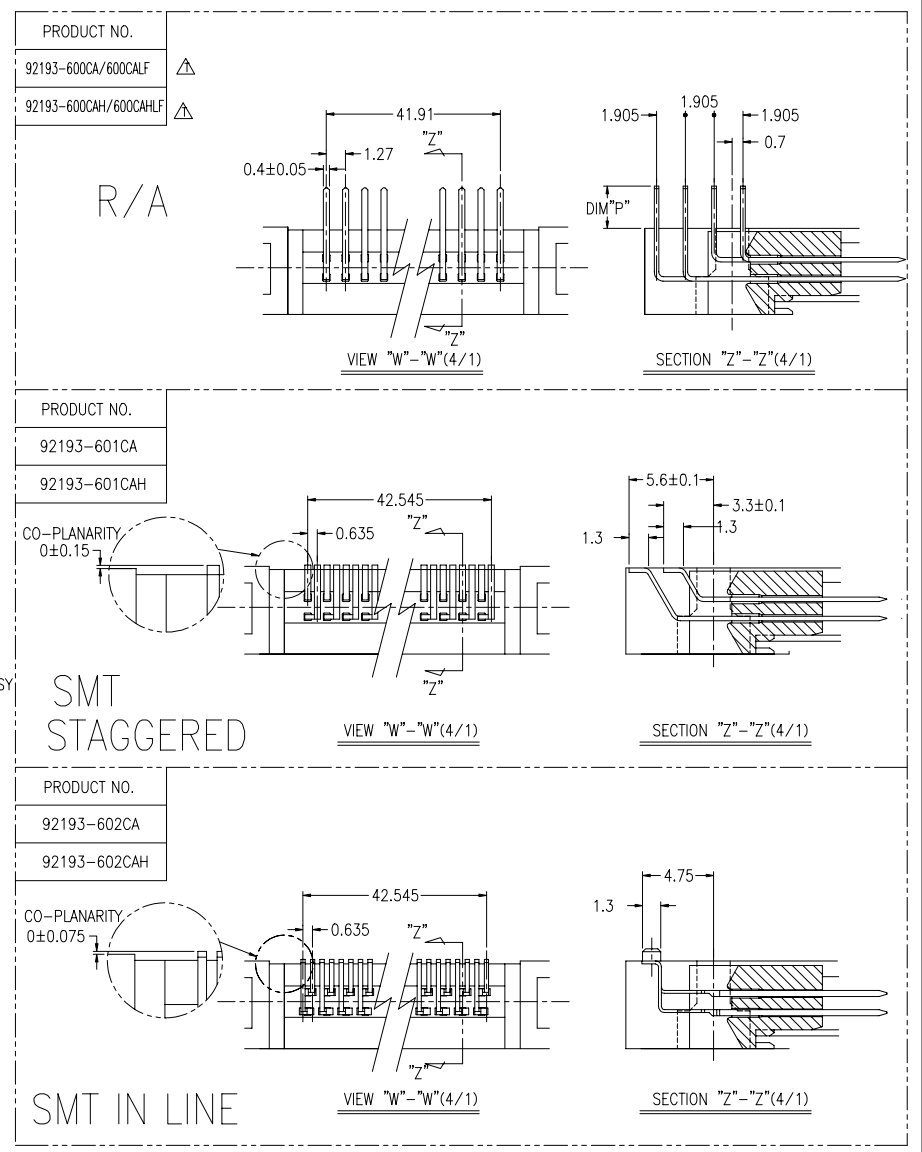


PRODUCT NO.	92193-601CAH
92193-600CA/600CALF	92193-602CA
92193-600CAH/600CAHLF	92193-602CAH
92193-601CA	

T	REVISED (ADDED -*****LF)	N05-0127/WB	J05/18/05	REVISIONS				
U				REV	DESCRIPTION	ECN	BY	DATE
				D	REVISED	V40840	M.K	7/5/94
				E	REVISED	V32120	M.K	12/27/94
				F	REVISED	J40349	M.K	1/9/95
				G	REVISED	J50242	M.K	9/18/95
				H	REVISED	J70134	K.S	8/8/97



- NOTE
- EJECT FORCE 3.5Kg MAX.
 - ASSY PROCESS
 - TO MOUNT PART (A) ON PWB WITH SCREW (S1,S2) AND SOLDER.
 - TO JOINT PART (B) INTO PART (A), THEN FIX PART (B) WITH 2 SCREWS (S3,S4).
 - EJECT TRAVEL 8.0mm
- (A) MATERIAL
- PART (A) (HEADER ASSY)
 - HOUSING : LCP UL94V-0
 - PIN : PHOSPHOR BRONZE
 - PART (B) (EJECT MECHANISM ASSY)
 - GUIDE : POLYPHTHARAMID UL94V-0 BLACK
 - PUSH ROD : FLAME RETARDANT UL94V-0
 - PLATE : STAINLESS
 - EMI CONTACT : PHOSPHOR BRONZE
 - OPTIONAL HOLD-DOWN : BRASS
- (B) FINISH 5.1 PIN
- UNDER PLATING : 0.5µm MIN. Ni
 CONTACT AREA : 0.1µm MIN. Au OVER 0.5µm MIN. Pd-Ni
 SOLDER TAIL : 2.5µm MIN. Sn-Pb OR 2.5µm MIN. PURE Sn.(FOR -*****LF)
- 5.2 EMI CONTACT
 UNDER PLATING : 2.0µm MIN. Ni
 CONTACT AREA : 0.5µm MIN. Au
- 5.3 OPTIONAL HOLD-DOWN : 2.5µm MIN. PURE Sn
6. PIN NO.
- | PIN No. | DIM "L" | |
|---------|----------|----------|
| | OTHERS | 36.67 |
| | 4.25±0.1 | 3.5±0.1 |
| | | 5.0±0.1 |
| | | 1.17,34 |
| | | 35.51,68 |
- SEE TA-946 FOR PCB LAYOUT.
 - SEE 92140 FOR DETAILED HDR DIMENSION.
 - SEE SHEET1.2 REGARDING COMPONENTS.
 - GENERAL TOLERANCE : ±0.3



SHEET INDEX	ISSUE	SH NO.	MAT	DR	DATE	CUSTOMER COPY	TITLE
			SEE NOTE (4)	J. Ono	8/8/97		68P EJECTOR HEADER ASSY FOR TYPE I/II/III (FOR 5.0V)
LINEAR	FINISH	SEE NOTE (5)	CHK	K. Suzuki	8/8/97	THIRD ANGLE PROJ	SCALE
ANGLES			APPD			UNIT	SIZE
						MM	DWG. NO.
						INCH	92193
							REV SHEET
							U 9 of

DF-003A REV C

DO NOT SCALE PRINT THIS INFORMATION IS CONFIDENTIAL AND IS DISCLOSED TO YOU ON CONDITION THAT NO FURTHER DISCLOSURE IS MADE BY YOU TO OTHER THAN BERG PERSONNEL WITHOUT WRITTEN AUTHORIZATION FROM BERG ELECTRONICS JAPAN K.K.

